

Long Term Average Annual Shoreline Change Rates Updated Through 1992

North Carolina

Division of Coastal Management

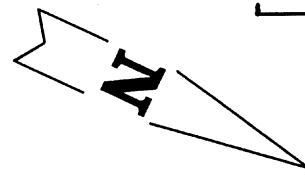
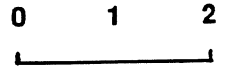
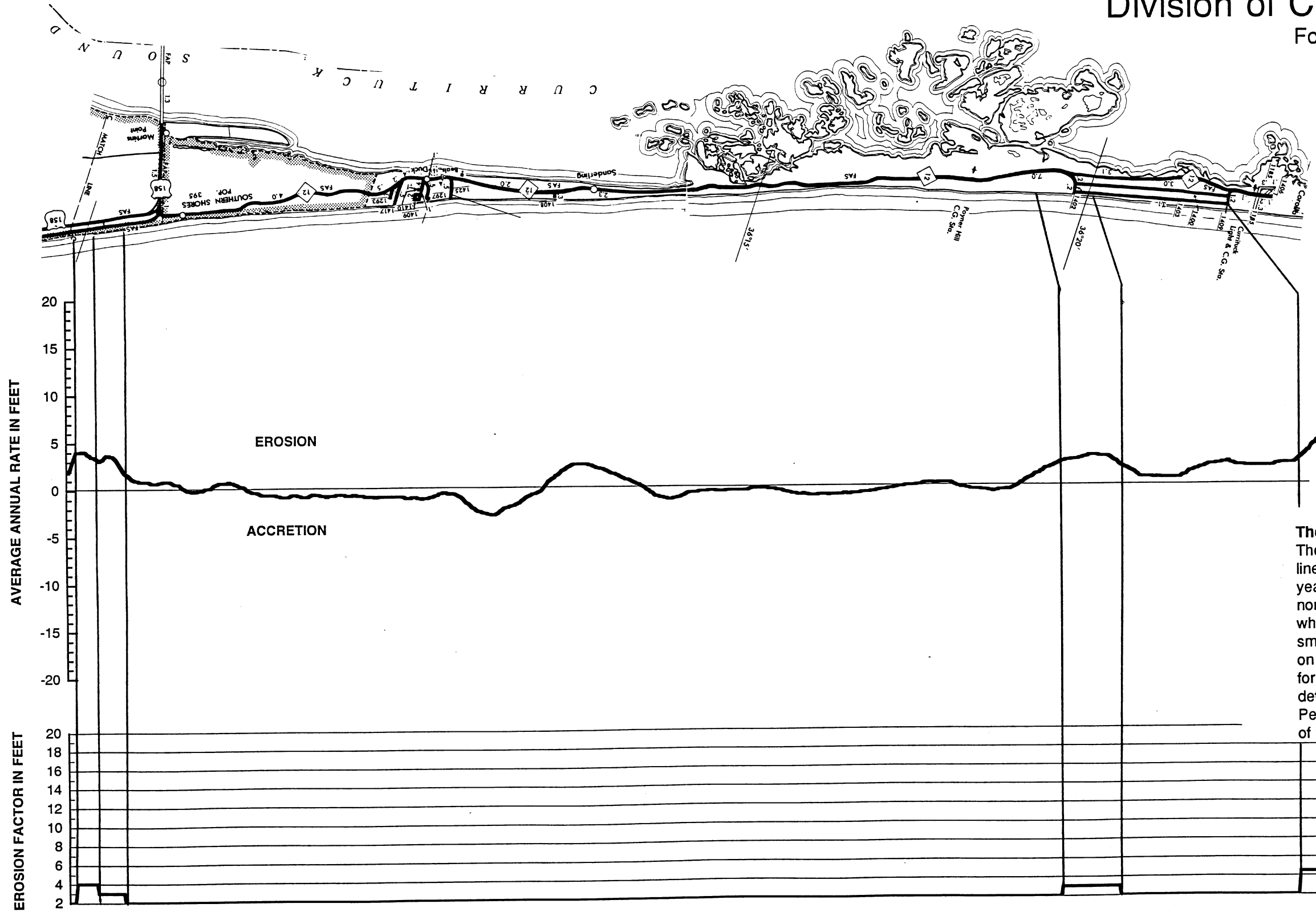
For More Information Contact us at:

P.O. Box 27687

Raleigh, N.C. 27611-7687

(919)-733-2293

Scale: 1 inch = 2 miles



These maps are for general information only.
 The maps illustrate average rates of shoreline change over the past approximately 50 years. The information is not predictive nor does it reflect the short term erosion which occurs during storms. Because of their small scale, these maps can not be relied on for determining the erosion rate factor for a specific property. For a site specific determination, contact your CAMA Local Permit Officer or the regional field office of the Division of Coastal Management.